

Distribuitor în România - Gada Ceramic București  
Str. Vlad Județu 48  
<https://gadaceramic.ro/produs/gresie-paris/>

Made in Italy



#Paris

TALK WITH MODERN DESIGN

  
**NovaBell**<sup>®</sup>  
Ceramiche Gruppo Bellei

Distribuitor în România - Gada Ceramic București  
Str. Vlad Județu 48  
<https://gadaceramic.ro/produs/gresie-paris/>

#Paris

New amazing size  
120  
x  
120

FLOOR: Plume Rettificato 120x120 - 47<sup>11/16</sup>x47<sup>11/16</sup>

# Talk with modern design

PARIS È LA MATERIA IN GRES PORCELLANATO CHE RIFLETTE **TUTTA LA BELLEZZA DELLE SUPERFICI IN RESINA**. PARIS È UN PROGETTO MODERNO CHE CATTURA LO SPAZIO CON IL FASCINO DI SUPERFICI URBAN-CHIC.

PARIS IS THE PORCELAIN STONEWARE MATERIAL THAT EVOKES **ALL THE BEAUTY OF RESIN SURFACES**. PARIS IS A MODERN PROJECT THAT CAPTURES SPACE WITH THE ALLURE OF URBAN-CHIC SURFACES.

Paris est la matière en grès cérame qui exprime **toute la beauté des surfaces en résine**. Paris est un projet moderne qui capture l'espace sous le charme des finitions « urban-chic ».

Paris es la materia de gres porcelánico que refleja **toda la belleza de las superficies de resina**. Paris es un proyecto moderno que captura el espacio con el encanto de superficies urban-chic.

Paris ist eine Feinsteinzeugfliese, die **die vollendete Ästhetik von Kunstharzflächen nachempfunden**. Paris ist ein modernes Projekt, das den Raum mit einem Urban-Chic-Design prägt.

Paris - это коллекция керамогранита, передающая **всю красоту поверхностей из смолы**. Paris - это современный проект, оформляющий пространство очаровательными материалами с городскими шармом.

Distribuitor în România - Gada Ceramic București  
Str. Vlad Județu 48  
<https://gadaceramic.ro/produs/gresie-paris/>

## NEW AMAZING SIZE EVEN MORE SPACE

IL PROGETTO PARIS SI ARRICCHISCE DEL  
**MAGNIFICO FORMATO 120X120 CM**  
CONCEDENDO ALLE SUPERFICI UNA  
**IMPAGABILE CONTINUITÀ VISIVA.**

IL DINAMISMO GRAFICO E I PREZIOSI MOVIMENTI  
MATERICI SI RINNOVANO ALL'INTERNO DI  
GRANDI MODULI CERAMICI, NOVABELL MOLTIPLICA  
IL VALORE DI TUTTI I MAGNIFICI DETTAGLI CHE  
RIEVOCANO LA STESURA MANUALE DELLA RESINA.

THE PARIS PROJECT NOW INCLUDES THE  
**MAGNIFICENT 120X120 CM SIZE**, TO GIVE SURFACES  
A PRICELESS **VISUAL CONTINUITY THE VIBRANT  
PATTERNS** AND EXQUISITE TACTILE VARIATIONS ARE  
RENEWED IN LARGE CERAMIC MODULES; NOVABELL  
MULTIPLIES THE BEAUTY OF ALL THE SPLENDID DETAILS  
THAT EVOKE THE MANUAL APPLICATION OF RESIN.

DAS KONZEPT PARIS WIRD ERWEITERT. DAS GROSSFORMAT  
120X120 CM SORGT FÜR NAHTLOS GESCHLOSSENE  
FLÄCHENBILDER. DIE DYNAMISCHEN STRUKTUREN UND  
KOSTBAREN MATERIALZEICHNUNGEN WERDEN VON NOVABELL  
AUF GROSSFORMATEN ELEGANT ZUR GELTUNG GEBRACHT. DIE  
TYPISCHEN DETAILS, DIE AN DEN MANUELLEN AUFTRAG VON  
HARZBESCHICHTUNGEN ERINNERN, ERHALTEN EINE NOCH WERTIGERE  
AUSSTRAHLUNG.

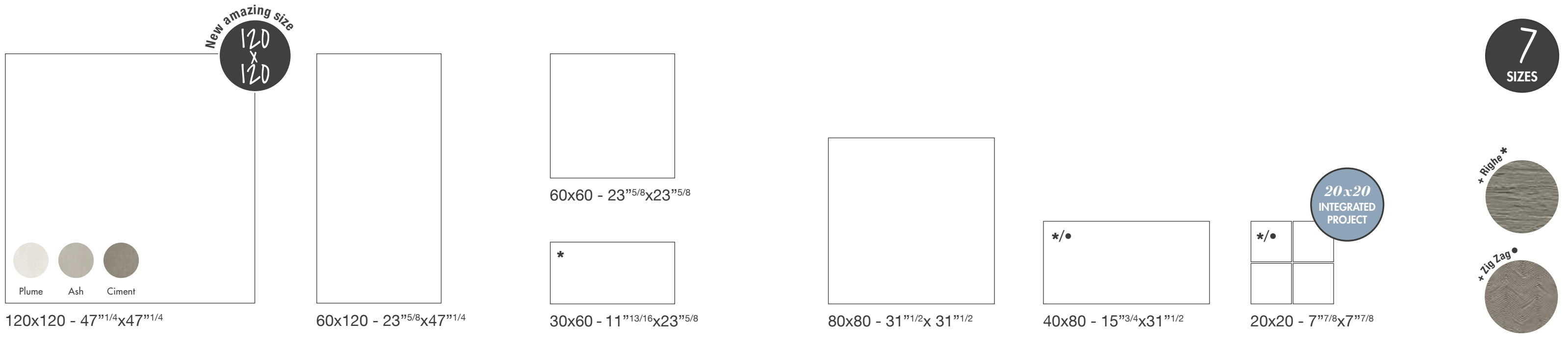
LE PROJET PARIS S'ENRICHIT AVEC LE MAGNIFIQUE FORMAT 120X120  
CM EN DONNANT AUX SURFACES UNE CONTINUITÉ VISUELLE  
EXCEPTIONNELLE. LE DYNAMISME GRAPHIQUE ET LES DÉLICATS  
MOUVEMENTS DE MATIÈRES SE RENOUVELLENT DANS DE GRANDS  
MODULES CÉRAMIQUES, NOVABELL MULTIPLIE LA VALEUR DE TOUS LES  
DÉTAILS ADMIRABLES QUI ÉVOQUENT L'APPLICATION  
MANUELLE DE LA RÉSINE.

EL PROYECTO PARIS SE ENRIQUECE CON EL MAGNÍFICO FORMATO  
120x120 CM Y APORTA UNA INESTIMABLE CONTINUIDAD VISUAL  
A LAS SUPERFICIES. EL DINAMISMO GRÁFICO Y LOS PRECIOSOS  
MOVIMIENTOS DE LA MATERIA SE RENUEVAN DENTRO DE LOS  
GRANDES MÓDULOS CERÁMICOS Y NOVABELL MULTIPLICA EL VALOR DE  
TODOS ESOS DETALLES ESPLÉNDIDOS QUE RECUERDAN A LA RESINA  
EXTENDIDA MANUALMENTE.

КОЛЛЕКЦИЯ PARIS ПОПОЛНЯЕТСЯ ИЗУМИТЕЛЬНЫМ ФОРМАТОМ  
120X120 CM. НАДЕЛЯЮЩИМ ПОВЕРХНОСТИ ВЕЛИКОЛЕПНОЙ  
ВИЗУАЛЬНОЙ НЕПРЕРЫВНОСТЬЮ. ДИНАМИЧНЫЙ ХАРАКТЕР  
ГРАФИКИ И ЦЕННАЯ ОЖИВЛЕННОСТЬ ФАКТУРЫ ПРИОБРЕТАЮТ  
НОВУЮ ЖИЗНЬ НА КРУПНЫХ КЕРАМИЧЕСКИХ МОДУЛЯХ. КРОМЕ  
ТОГО, NOVABELL ПОДЧЕРКИВАЕТ КРАСОТУ ВСЕХ ВЕЛИКОЛЕПНЫХ  
ДЕТАЛЕЙ, ВОССОЗДАЮЩИХ РУЧНОЙ СПОСОБ НАНЕСЕНИЯ  
СМОЛЫ.



Distribuitoar în România - Gada Ceramic București  
 Str. Vlad Juzețu 48  
<https://gadaceramic.ro/produs/gresie-paris/>



## MODERN COLOUR SHADES

LA PALETTE CROMATICA PARIS TRAE ISPIRAZIONE DALLE ULTIME TENDENZE DELL'INTERIOR DESIGN. **CINQUE TONALITÀ NATURALI E POLVEROSE NATE PER ESSERE ABBINATE O PER VESTIRE SOFISTICATI SPAZI MONOCROMATICI.**

THE PARIS COLOUR RANGE DRAWS INSPIRATION FROM THE LATEST INTERIOR DESIGN TRENDS. **FIVE NATURAL, DUSTY SHADES CONCEIVED FOR USE IN COMBINATION, OR FOR SOPHISTICATED MONOCHROME SPACES.**

La palette de couleurs Paris s'inspire des dernières tendances en décoration d'intérieur. **Cinq tonalités naturelles et poudrées créées pour s'assortir ou pour revêtir les cadres monochromes sophistiqués.**

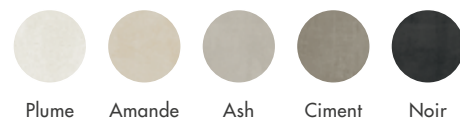
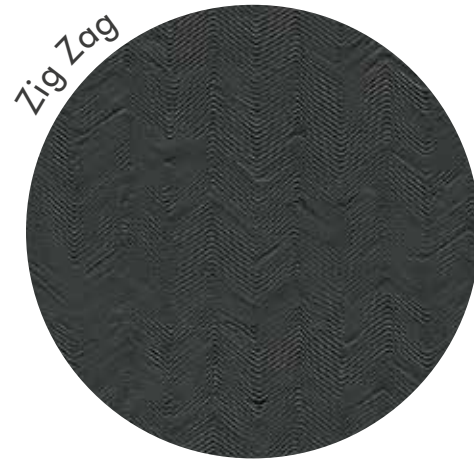
Die Farbenpalette von Paris ist an den neuesten Trends im Innendesign inspiriert. **Fünf natürliche und staubige Töne, die zur kombinierten Verlegung oder zur einfarbigen Gestaltung eleganter Räume konzipiert wurden.**

La paleta cromática de Paris se inspira en las últimas tendencias del interiorismo. **Cinco tonalidades naturales y pulverulentas concebidas para ser combinadas o bien para revestir sofisticados espacios monocromáticos.**

Цветовая палитра Paris вдохновлена последними тенденциями в дизайне интерьера. **Пять натуральных и пыльных цветов созданы для сочетания друг с другом или для изысканной отделки пространств в одном только цвете.**

Distribuitoare în România - Gada Ceramic București  
Str. Vlad Județu 48  
<https://gadaceramic.ro/produs/gresie-paris/>

## THREE-DIMENSIONAL SCULPTURAL SURFACES



I MODULI **ZIG ZAG E RIGHE** TRASFERISCONO **FASCINO CARISMATICO ALLE SUPERFICI VERTICALI**, LE TEXTURE DAL SAPORE METROPOLITANO INTERPRETANO LO SPAZIO CON DINAMISMO, GARANTENDO **SCENOGRAFIE MATERICHE UNICHE**. LE STRUTTURE TRIDIMENSIONALI PARIS SONO PROGETTATE PER ESSERE INDUSTRIALIZZATE IN LINEA, QUESTA CARATTERISTICA NON PONE LIMITI DI POSA E UTILIZZO.

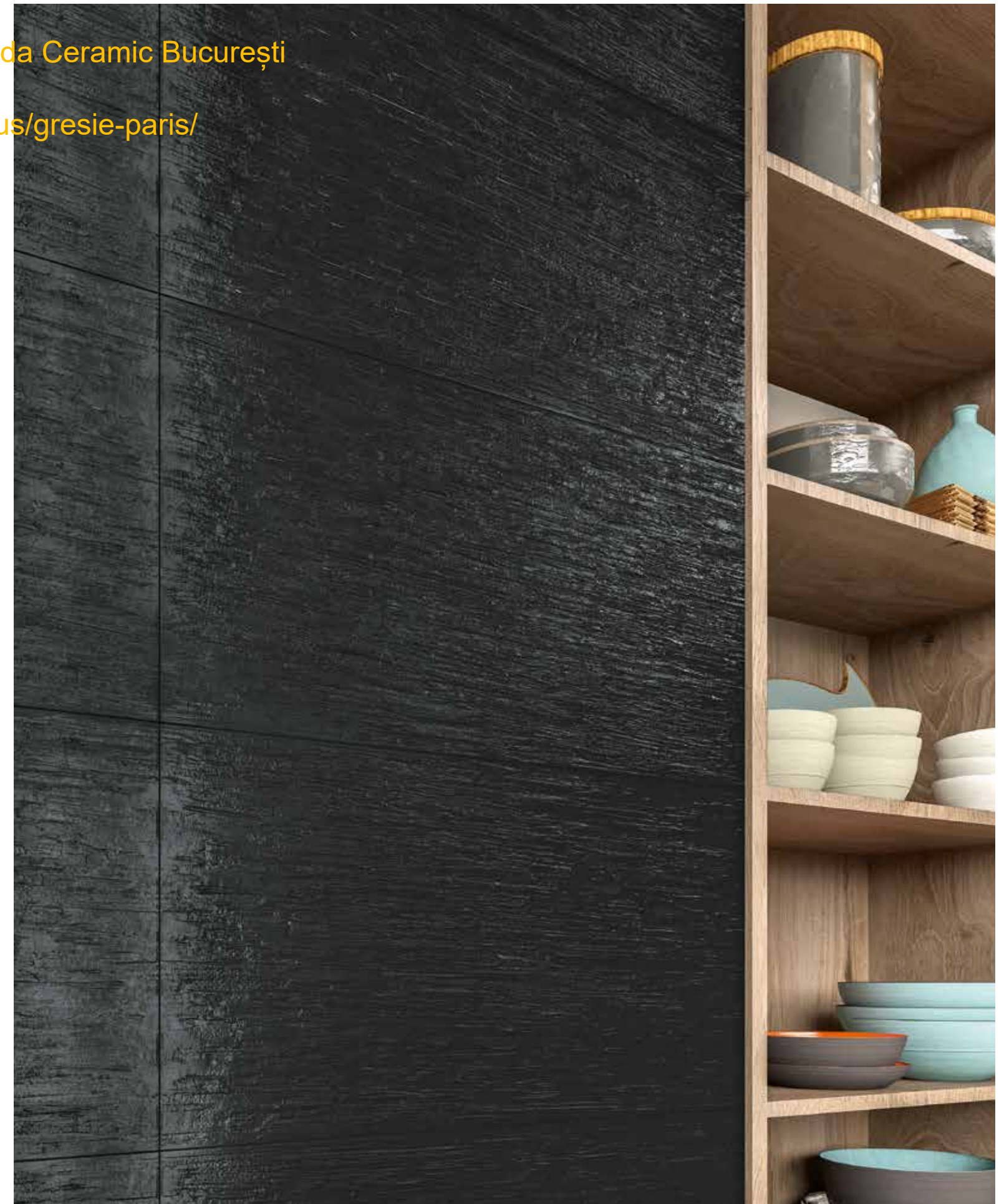
THE **ZIG ZAG AND RIGHE** MODULES BRING A **CHARISMATIC APPEAL TO VERTICAL SURFACES**; THEIR TEXTURES, WITH A METROPOLITAN FLAVOUR, DEFINE SPACE WITH DYNAMISM, FOR **UNIQUE, TACTILE EFFECTS**. THE PARIS THREE-DIMENSIONAL STRUCTURES ARE DESIGNED FOR IN-LINE INDUSTRIALISATION, MEANING THERE ARE NO LIMITS ON THEIR INSTALLATION AND USE.

Les modules **Zig Zag et Righe** donnent du **charisme aux surfaces verticales**. Les textures à l'esprit métropolitain apportent à l'espace dynamisme et créent des **exceptionnels effets de matières**. Les structures tridimensionnelles Paris sont faites pour être industrialisées en ligne. Cette caractéristique l'affranchit de toutes les limites de pose et d'application.

Die Module **Zig Zag und Righe** verleihen **vertikalen Flächen** einen **charismatischen Charme**. Die Texturen im Urban-Look verbreiten eine dynamische Ausstrahlung und garantieren **einmalige materialbetonte Effekte**. Die 3D-Reliefs von Paris wurden für eine industrielle Linienfertigung konzipiert, wodurch den Verlege- und Anwendungsmöglichkeiten keine Grenzen gesetzt sind.

Los módulos **Zig Zag y Righe** transmiten un **encanto carismático a las superficies verticales**, las texturas de sabor metropolitano interpretan el espacio con dinamismo, garantizando **escenografías matéricas únicas**. Las estructuras tridimensionales de Paris se proyectan para ser industrializadas en línea, característica esta que permite la máxima libertad de colocación y de uso.

Модули **Zig Zag (зигзаг) и Righe (в полосу)** наделяют **вертикальные поверхности харизматическим очарованием**. Текстуры в городском вкусе придают динамизм пространствам, оформляя **уникальные по своим характеристикам интерьеры**. Рельефные элементы Paris созданы для стандартного серийного производства, таким образом обеспечивая их совершенно свободную укладку и применение.



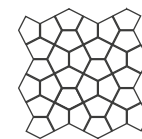
Distribuitoare în România - Gada Ceramic București  
 Str. Vlad Județu 48  
<https://gadaceramic.ro/produs/gresie-paris/>



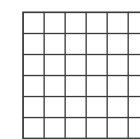
## Decors

### TAILOR-MADE SIZE

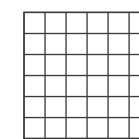
OGNI MODULO PARIS È STATO PENSATO E PROGETTATO PER FAR RISALTARE L'AUTENTICITÀ MATERICA. DAI GRANDI MODULI 120X120 CM CHE DONANO CONTINUITÀ DI SUPERFICIE AI PREZIOSI 20X20 CM, RICCHI DI PERSONALITÀ, IDEALI PER TUTTI I PICCOLI SPAZI PUBBLICI E DOMESTICI.



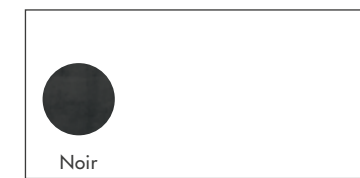
Mosaico Losanga  
 27x27 - 10<sup>5/8</sup>x10<sup>5/8</sup>



Mosaico 5x5 Mix  
 30x30 - 11<sup>13/16</sup>x11<sup>13/16</sup>



Mosaico 5x5  
 30x30 - 11<sup>13/16</sup>x11<sup>13/16</sup>



Decoro Brosse  
 40x80 - 15<sup>3/4</sup>x31<sup>11/2</sup>



Tozzetti 5x5  
 5x5 - 2"x2"

EVERY PARIS MODULE IS CONCEIVED AND DESIGNED FOR THE UTMOST TACTILE AUTHENTICITY. FROM THE **LARGE 60X120 CM MODULES THAT GIVE CONTINUITY TO SURFACES TO THE EXQUISITE 20X20 CM TILES, RICH IN PERSONALITY, IDEAL FOR ALL SMALL PUBLIC AND DOMESTIC SPACES.**

Chaque module Paris a été conçu et mis au point pour exalter l'authenticité de la matière. Des **grands modules 120x120 cm apportant continuité visuelle aux délicats formats 20x20 cm de caractère**, parfaits pour tous les petits espaces publics et résidentiels.

Die Module der Serie Paris bringen den authentischen Charakter der materialbetonten Optik zur Geltung. Von den **großen Modulen 120x120 cm für einheitliche Flächengestaltungen bis zu den wertigen Modulen 20x20 cm für charaktervolle Akzente**, die für alle kleinen Räume im privaten und öffentlichen Bereich geeignet sind.

Cada uno de los módulos de Paris ha sido pensado y proyectado para poner de relieve la autenticidad matérica. Desde **los módulos grandes de 120x120 cm, que dan continuidad a la superficie, hasta las preciosas piezas de 20x20 cm, llenas de personalidad** e ideales para revestir espacios reducidos, tanto públicos como domésticos.

Каждый модуль коллекции Paris был придуман и разработан для подчеркивания красоты материала. Начиная с **крупных форматов 120x120 см, создающих сплошные поверхности, и вплоть до престижных модулей 20x20 см с богатым индивидуальным характером**, отличных для использования на любых общественных и жилых объектах.

# PROGETTO INTEGRATO

## INTEGRATED PROJECT

PARIS SI INSERISCE  
ALL'INTERNO DEL  
**PROGETTO INTEGRATO  
NOVABELL**, SUPERFICI  
NATE PER MISCELARSI  
LE UNE ALLE ALTRE,  
CREANDO SINERGIE  
INEDITE ARRICCHENDO  
COSÌ IL PROGETTO  
ARCHITETTONICO  
CONTEMPORANEO.

Distribuito în România - Gada Ceramic București  
Str. Vlad Jugetu 48  
<https://gadamaterial.ro/produs/gresie-paris/>

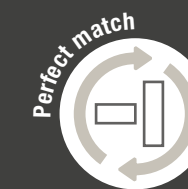
PARIS BELONGS TO THE  
**NOVABELL INTEGRATED  
PROJECT OF SURFACES  
DESIGNED FOR  
MIXING WITH EACH  
OTHER, CREATING  
ORIGINAL SYNERGIES  
AND ENRICHING  
THE POTENTIAL OF  
CONTEMPORARY  
ARCHITECTURE.**

Paris s'inscrit dans le cadre du **projet intégré NovaBell**, des surfaces nées pour se mélanger entre elles et pour former des synergies inédites qui enrichissent le projet d'architecture contemporaine.

Paris fügt sich in das **integrierte NovaBell Konzept** ein. Oberflächen, die in ungewöhnlichen Kompositionen zusammenwirken und somit den Spielraum für moderne Gestaltungskonzepte bereichern.

Paris se inscribe en el **proyecto integrado NovaBell**, superficies ideadas para mezclarse unas con otras, creando sinergias inéditas y enriqueciendo de este modo el proyecto arquitectónico contemporáneo.

Paris является частью **интегрированного проекта NovaBell**, в который входят коллекции, созданные для смешивания друг с другом, образуя оригинальную синергию и обогащая современный архитектурный проект.



**DÉCO**  
STYLISH & DECORATIVE SURFACE



Plume

THE GREAT  
FUNCTIONAL  
BEAUTY

Distribuitor în România - Gada Ceramic București  
Str. Vlad Județu 48  
<https://gadaceramic.ro/produs/gresie-paris/>



WALL: Plume Rettificato 60x120 - 23<sup>5/8</sup>x47<sup>1/4</sup>  
FLOOR: Plume Rettificato 120x120 - 47<sup>1/4</sup>x47<sup>1/4</sup>



Distribuitor în România - Gada Ceramic București  
Str. Vlad Județu 48  
<https://gadaceramic.ro/produs/gresie-paris/>

New amazing size  
120  
x  
120



# Plume

## THE GREAT FUNCTIONAL BEAUTY

I GRANDI MODULI 120X120 CM SI COORDINANO PERFETTAMENTE AI FORMATI CERAMICI ESISTENTI. **PARIS INTRECCIA UN'ARMONIOSA RELAZIONE TRA PARETI, PAVIMENTI E TUTTI GLI ELEMENTI ARCHITETTONICI FUNZIONALI, COMBINANDO FORMATI E INTRECCI CROMATICI.**

THE LARGE 120X120 CM MODULES ARE A PERFECT MATCH WITH THE EXISTING TILE SIZES. **PARIS WEAVES A FLAWLESS RELATIONSHIP BETWEEN WALLS, FLOORS AND ALL FUNCTIONAL ARCHITECTURAL FEATURES, COMBINING SIZES AND INTERSECTING COLOURS.**

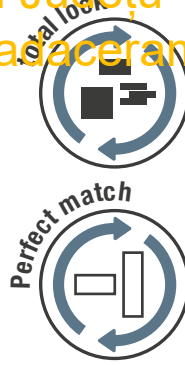
DIE GROSSFORMATE 120X120 CM PASSEN PERFEKT ZU DEN BEREITS VORHANDENEN KERAMIKFORMATEN. PARIS LÄSST DURCH DIE KOMBINATION VON FORMATEN UND FARBEN EINE GELUNGENE LIAISON ZWISCHEN WAND, BODEN UND ALLEN WEITEREN FUNKTIONALEN BAUELEMENTEN ENTSTEHEN.

LES GRANDS MODULES 120X120 CM SONT PARFAITEMENT COORDONNÉS AVEC LES FORMATS CÉRAMIQUES EXISTANTS. PARIS TISSE UNE RELATION HARMONIEUSE ENTRE MURS, SOLS ET TOUS LES ÉLÉMENTS ARCHITECTURAUX FONCTIONNELS, EN COMBINANT LES FORMATS ET LES ALLIANCES CHROMATIQUES.

LOS GRANDES MÓDULOS DE 120x120 CM SE COMBINAN PERFECTAMENTE CON LOS FORMATOS DE CERÁMICA EXISTENTES. PARIS TEJE UNA RELACIÓN ARMONIOSA ENTRE LAS PAREDES, LOS PAVIMENTOS Y TODOS LOS ELEMENTOS ARQUITECTÓNICOS FUNCIONALES, COMBINANDO FORMATOS Y TRAMAS CROMÁTICAS.

КРУПНОРАЗМЕРНЫЕ МОДУЛИ 120X120 CM ОТЛИЧНО СОЧЕТАЮТСЯ С ИМЕЮЩИМИСЯ ФОРМАТАМИ КЕРАМИКИ. PARIS НАЛАЖИВАЕТ ГАРМОНИЧНУЮ СВЯЗЬ МЕЖДУ СТЕНАМИ, ПОЛАМИ И ЛЮБЫМИ ФУНКЦИОНАЛЬНЫМИ ЭЛЕМЕНТАМИ АРХИТЕКТУРЫ, ОБЪЕДИНЯЯ РАЗНЫЕ ФОРМАТЫ И ЦВЕТОВЫЕ СОЧЕТАНИЯ.

Distribuito în România - Gada Ceramic București  
Str. Vlad Județu 48  
<https://gadac ceramic.ro/produs/gresie-paris/>

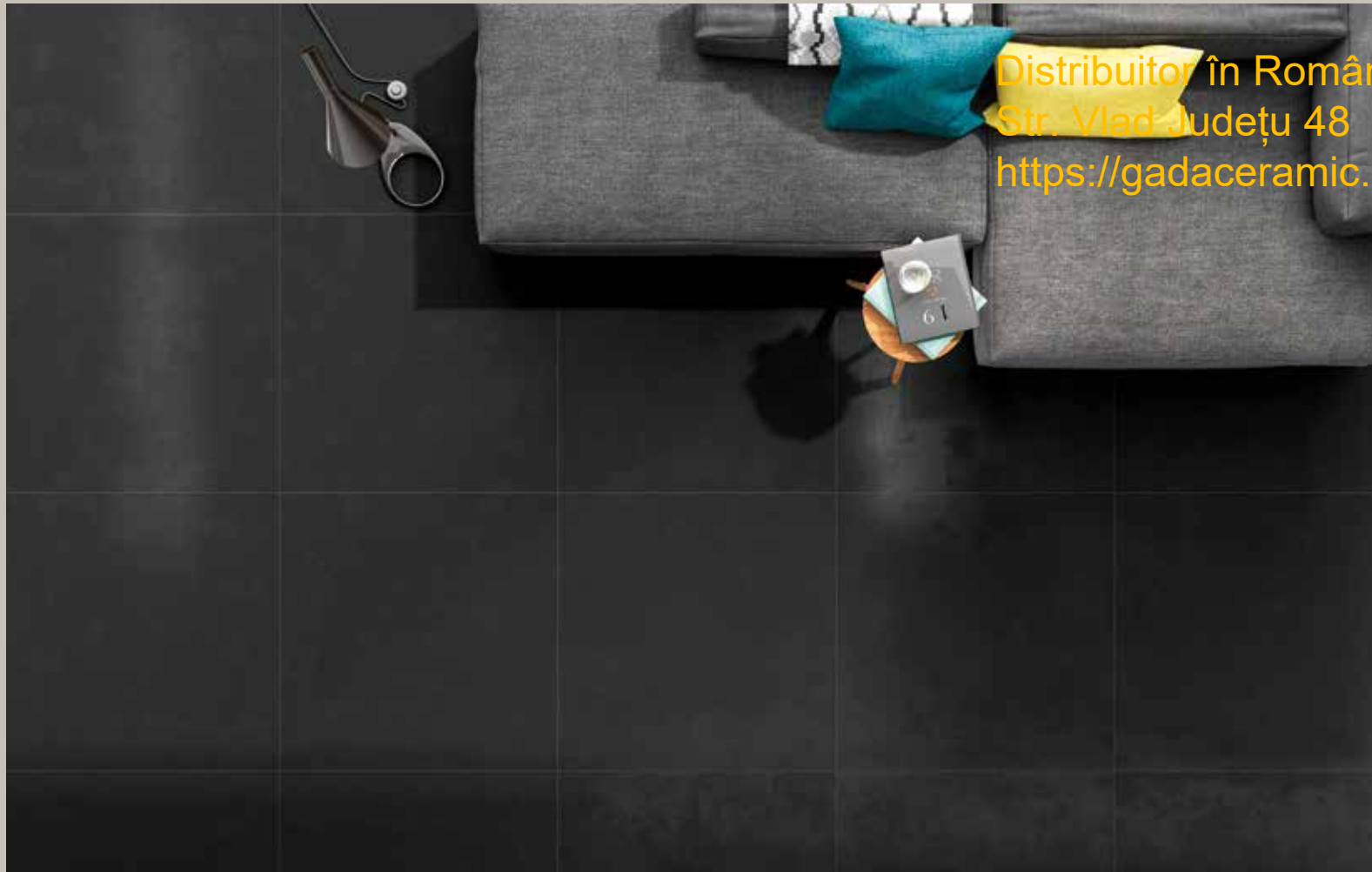


Distribuitor în România - Gada Ceramic București  
Str. Vlad Județu 48  
<https://gadaceramic.ro/produs/gresie-paris/>

Ciment + Noir

FOREVER YOUNG

WALL: Ciment Rettificato 40x80 - 15<sup>3/4</sup>x31<sup>1/2</sup>  
Mosaico Losanga Ciment 27x27 - 10<sup>5/8</sup>x10<sup>5/8</sup>  
FLOOR: Noir Rettificato 80x80 - 31<sup>1/2</sup>x31<sup>1/2</sup>



Distribuitor în România - Gada Ceramic București  
 Str. Vlad Județu 48  
<https://gadaceramic.ro/produs/gresie-paris/>



I GRANDI MODULI PARIS, POSATI CON FUGA MINIMA, ATTRAVERSANO LO SPAZIO DISEGNANDO SUPERFICI SENZA SOLUZIONE DI CONTINUITÀ. **NOVABELL PENSA E PRODUCE MATERIE CERAMICHE EVOLUTE CAPACI DI CONSERVARE NEL TEMPO FASCINO E PERFORMANCE.**

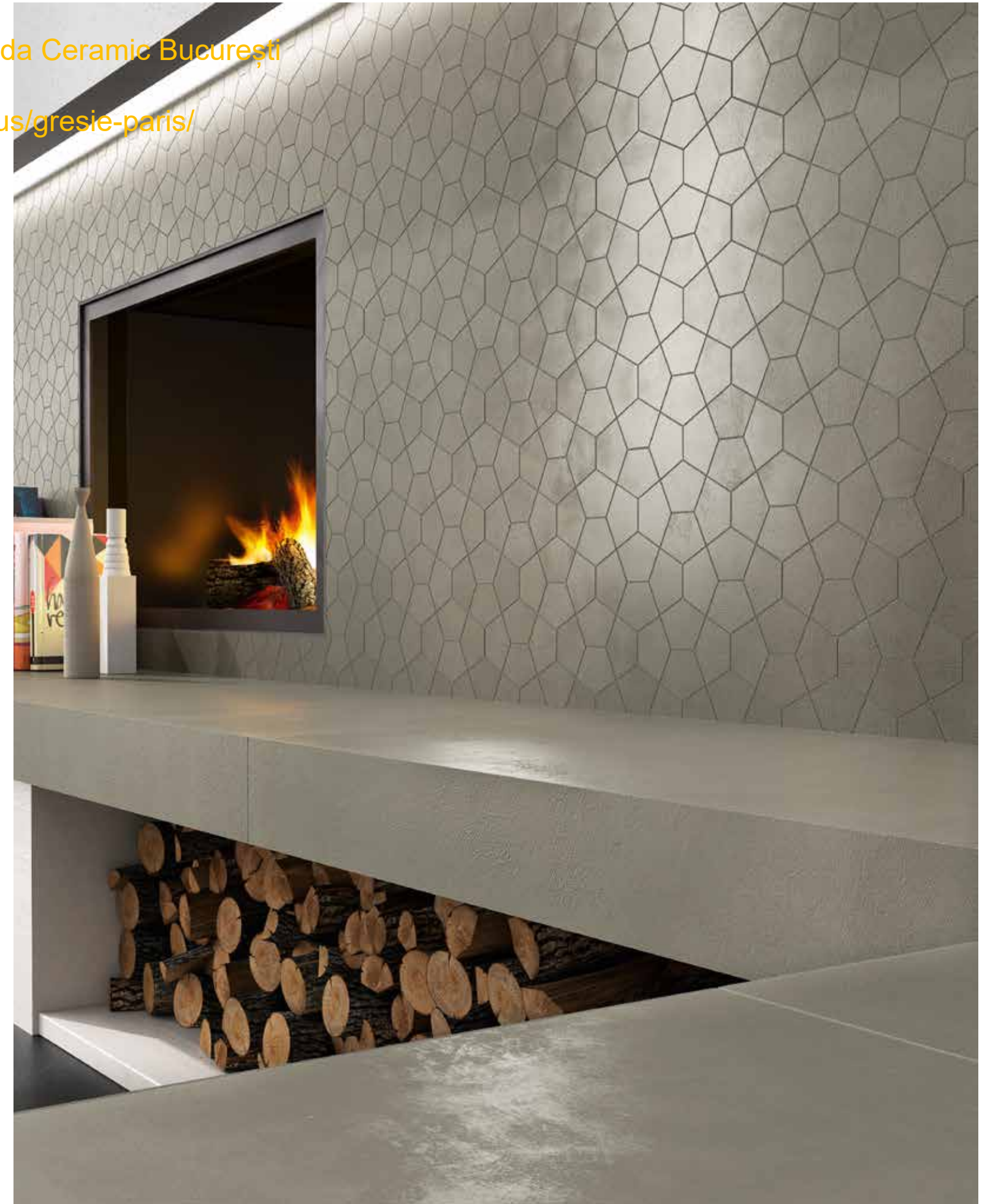
INSTALLED WITH A MINIMAL JOINT, THE LARGE PARIS MODULES SWEEP ACROSS SPACE, FORMING UNBROKEN SURFACES. **NOVABELL CONCEIVES AND PRODUCES STATE-OF-THE-ART CERAMIC MATERIALS THAT WILL CONSERVE THEIR BEAUTY AND PERFORMANCE OVER TIME.**

Posés à joints réduits, les grands modules Paris traversent l'espace pour dessiner des surfaces continues. **NovaBell conçoit et fabrique des céramiques d'avant-garde, à même de conserver à jamais charme et performance.**

Die großen Module von Paris ziehen sich bei einer Verlegung mit minimaler Fugenbreite mit einem nahtlosen Flächenbild durch den Raum. **NovaBell entwickelt und fertigt moderne Keramik, die ihre Schönheit und ihre Leistungsmerkmale auf lange Zeit bewahrt.**

Los grandes módulos de Paris, colocados dejando una junta mínima, cruzan el espacio dibujando superficies sin solución de continuidad. **NovaBell piensa y produce materias cerámicas evolucionadas, capaces de conservar su encanto y sus prestaciones a lo largo del tiempo.**

Уложенные с минимальными швами крупноразмерные модули Paris отделывают пространства, создавая сплошные поверхности. **NovaBell разрабатывает и выпускает передовые керамические материалы, способные сохранять свое очарование и свои характеристики с течением времени.**



Distribuitoare în România - Gada Ceramic București  
Str. Vlad Județu 48  
<https://gadaceramic.ro/produs/gresie-paris/>

Noir

## PERSONAL CREATIVITY



**NOVABELL NON PONE LIMITI ALLA CREATIVITÀ PERSONALE E SUGGERISCE ABBINAMENTI TRA MATERIE CERAMICHE E ATTRAVERSO L'USO MODERNO DEL MIX&MATCH COMPONE SPAZI CHE FANNO CONVIVERE EFFETTI LEGNO, RESINA, MODULI TRIDIMENSIONALI E DECORAZIONI DAL SAPORE RÉTRO.**

**NOVABELL SETS NO LIMITS TO PERSONAL CREATIVITY AND SUGGESTS COMBINATIONS BETWEEN CERAMIC MATERIALS. WITH MODERN USE OF THE MIX&MATCH APPROACH, IT BUILDS UP SPACES THAT BRING TOGETHER WOOD AND RESIN EFFECTS, THREE-DIMENSIONAL MODULES AND RETRO DECORATIONS.**

**NovaBell libère totalement la créativité personnelle,** encourageant l'union entre les différentes matières céramiques. Par un emploi moderne du Mix&Match, NovaBell dessine des espaces où cohabitent l'effet bois, l'effet résine, les modules tridimensionnels et les décorations à l'esprit rétro.

**NovaBell setzt der persönlichen Gestaltungsfreiheit keine Grenzen** und empfiehlt Materialkompositionen aus Keramik im modernen Mix&Match-Stil für Raumgestaltungen, in denen Holz- und Kunstharzoptiken, Module mit 3D-Reliefs und Dekorationen im Retro-Look effektiv miteinander kombiniert werden.

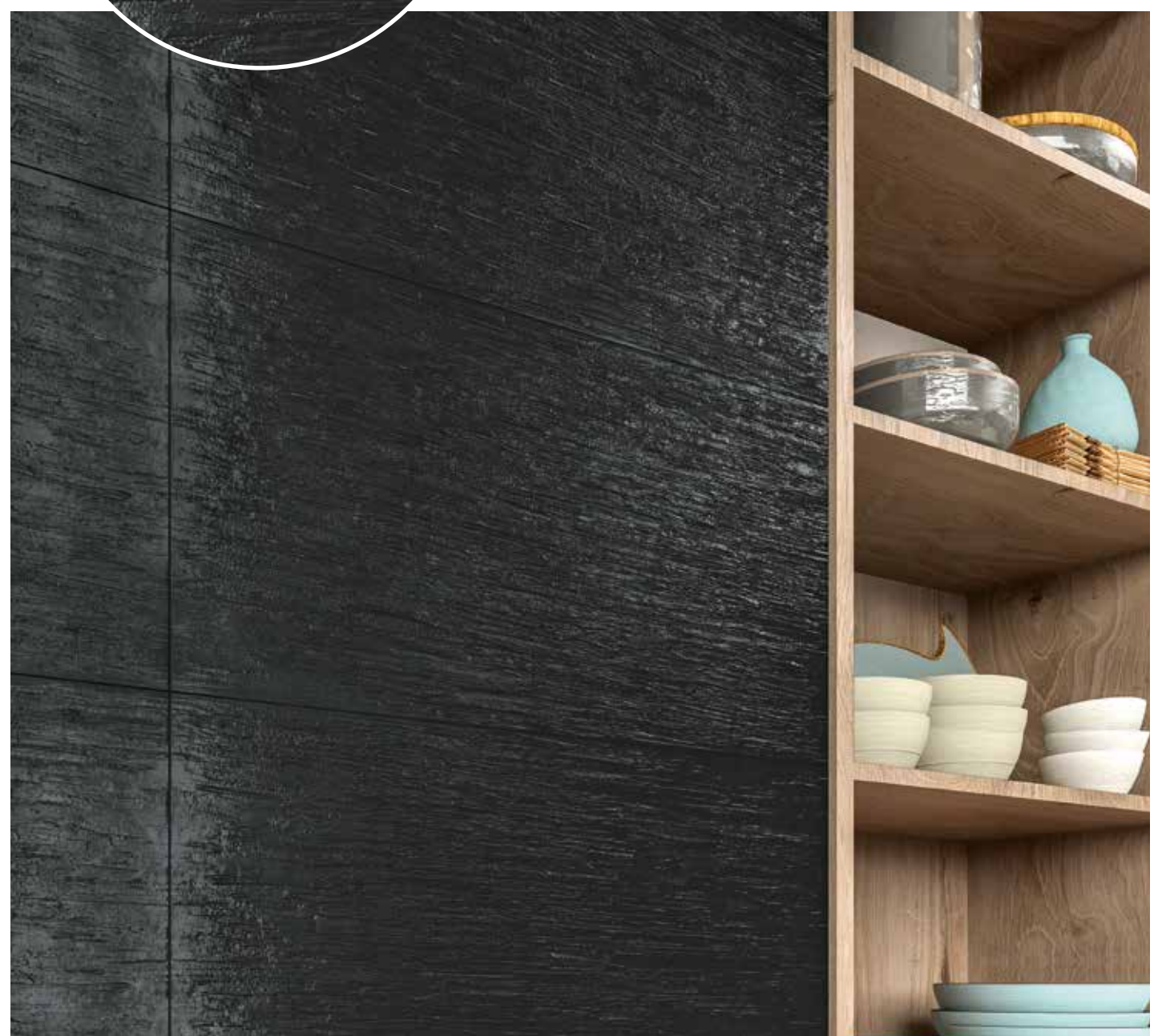
Righe



NovaBell no pone barreras a la creatividad personal, sugiere combinaciones entre materias cerámicas y, empleando el moderno Mix&Match, compone espacios en los que conviven efectos madera, resina, módulos tridimensionales y decoraciones de aire rétro.

Distribuitor în România - Gada Ceramic București  
Str. Vlad Julețu 48  
<https://gadaceramic.ro/produs/gresie-paris/>

NovaBell не создает препятствий индивидуальному творчеству, наоборот, предлагает сочетания различных керамических коллекций и при помощи современного стиля «Mix&Match» оформляет пространства, в которых соседствуют материалы под дерево, смолу, рельефные элементы и декоры в стиле ретро.



Ash

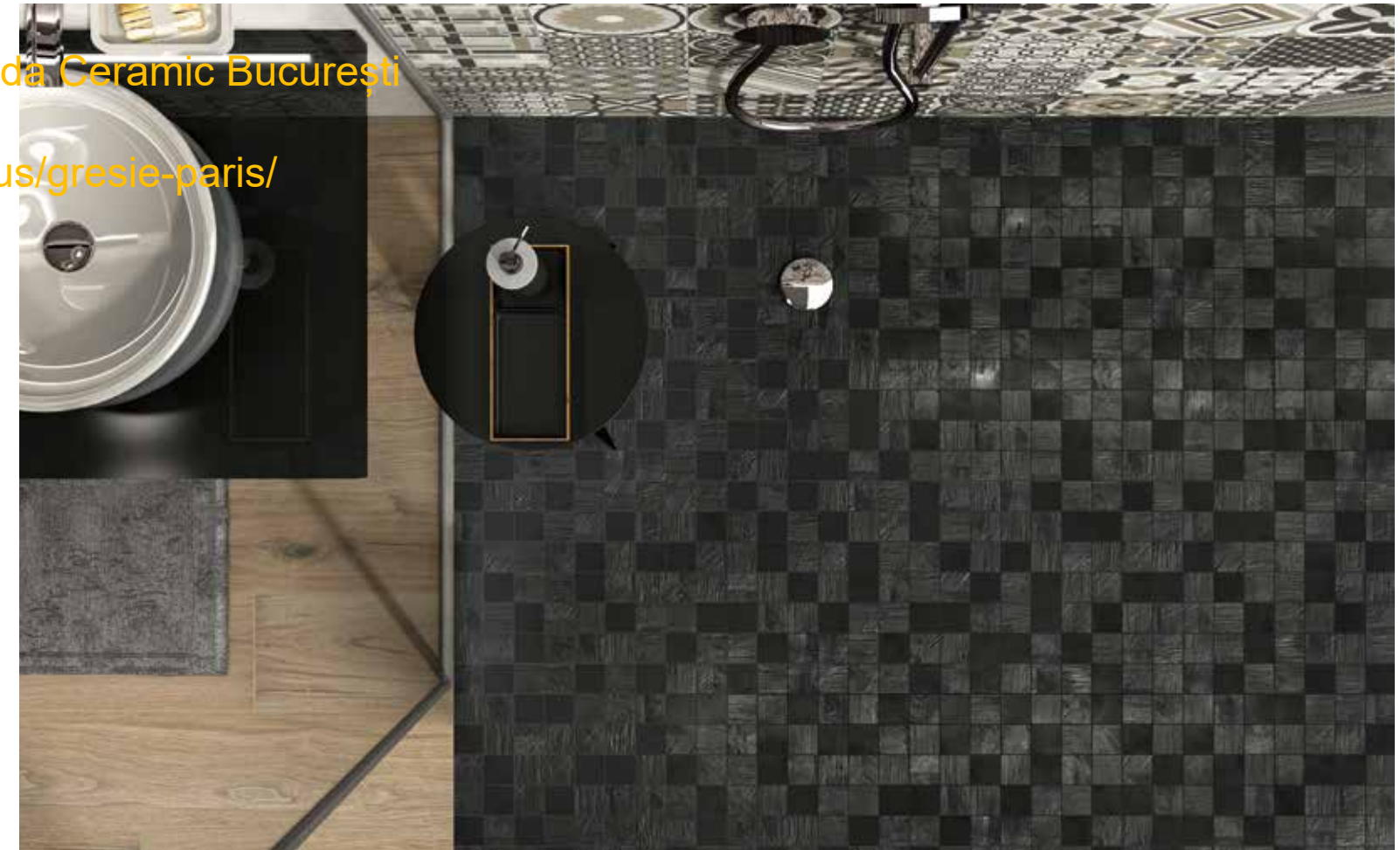
WELCOMING  
SPACES

Distribuitor în România - Gada Ceramic București  
Str. Vlad Județu 48  
<https://gadaceramic.ro/produs/gresie-paris/>



WALL: Struttura Zig Zag Ash Rettificato 40x80 - 15<sup>3/4</sup>x31<sup>11/2</sup> / Ash Rettificato 40x80 - 15<sup>3/4</sup>x31<sup>11/2</sup> / DÉCO Cimentine Mix 20x20 - 7<sup>7/8</sup>x7<sup>7/8</sup>  
FLOOR: Mos. 5x5 Noir 30x30 - 11<sup>13/16</sup>x11<sup>13/16</sup> / EICHE Scottish Rettificato 20x120 - 7<sup>7/8</sup>x47<sup>1/4</sup>

Distribuitoare în România - Gada Ceramic București  
Str. Vlad Județu 48  
<https://gadaceramic.ro/produs/gresie-paris/>



LA STANZA DA BAGNO È LO SPAZIO INTIMO E PREZIOSO DOVE CONVERGONO L'ENERGIA CREATIVA NOVABELL E LE SOLUZIONI TECNOLOGICHE DEL GRES PORCELLANATO PIÙ EVOLUTO. STRUTTURE TRIDIMENSIONALI, MOSAICI ED EFFETTI LEGNO CONVIVONO IN ARMONIA OFFRENDO BELLEZZA, COMFORT E PRATICITÀ.

THE BATHROOM IS THE INTIMATE, PRECIOUS SPACE WHERE NOVABELL'S CREATIVE ENERGY AND THE TECHNOLOGICAL SOLUTION OF LEADING-EDGE PORCELAIN STONWARE CONVERGE. THREE-DIMENSIONAL STRUCTURES, MOSAICS AND WOOD EFFECTS FORM AN ATTRACTIVE BLEND OF BEAUTY, COMFORT AND PRACTICALITY.

La salle de bains est la pièce intime et précieuse où fusionnent l'énergie créatrice de NovaBell et la force technologique du grès cérame le plus sophistiqué. Les structures tridimensionnelles, les mosaïques et les effets bois se côtoient en parfaite harmonie, apportant beauté, confort et utilité pratique.

Das Bad ist ein intimer Raum, wo die Ausstrahlung des NovaBell Designs und die technischen Vorzüge von modernem Feinsteinzeug zusammentreffen. 3D-Reliefs, Mosaïke und Holzoptiken harmonieren miteinander und bieten Schönheit, Komfort und Funktionalität.

El baño es el espacio íntimo y precioso en el que convergen la energía creativa de NovaBell y las soluciones tecnológicas del gres porcelánico más evolucionado. Estructuras tridimensionales, mosaicos y efectos madera conviven armoniosamente ofreciendo belleza, comodidad y practicidad.

Ванная комната представляет собой то уютное и престижное пространство, куда стекаются созидательная энергия NovaBell и технологические решения самого высокотехнологичного керамогранита. Рельефная плитка, мозаика и имитация дерева гармонично уживаются, создавая красивые, уютные и практичные интерьеры.

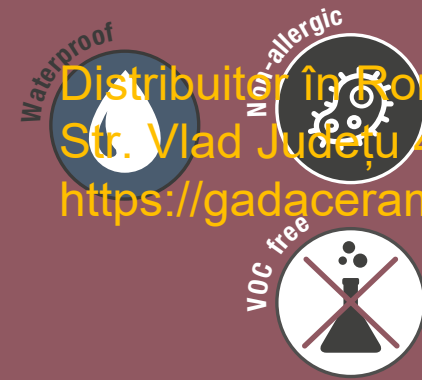


# Amande

## SMOOTH TOUCH

LIEVISSIME INCRESPATURE E SMALTI SETOSI RICHIAMANO LE ABILI STESURE ARTIGIANALI, INSIEME AI PICCOLI MODULI 20X20 CM EVOCANO STANZE PIENE DI CALORE, CON TUTTA LA SICUREZZA DI UN GRES PORCELLANATO ECOLOGICO E SICURO.

THE SUBTLEST OF WRINKLES AND SILKY GLAZES RECALL MATERIALS SPREAD BY CRAFTSMEN; TOGETHER WITH THE SMALL 20X20 CM MODULES, THEY EVOKE ROOMS FULL OF WARMTH, WITH ALL THE REASSURANCE OF AN ECO-FRIENDLY, SAFE PORCELAIN STONEWARE.



Distribuito în România - Gada Ceramic București  
Str. Vlad Juzețu 48  
<https://gadaceramic.ro/produs/gresie-paris/>

FORMALDEHYDE-FREE  
ASBESTOS-FREE  
CHLORINE-FREE

Les ondulations discrètes et les émaux soyeux rappellent le travail des maîtres-artisans et, avec les petits modules 20x20 cm, donnent aux pièces une impression de chaleur, avec toute la sécurité d'un grès cérame écologique et sûr.

Feine Kräuselungen und seidige Glasuren erzeugen eine Optik, die den handwerklichen Spuren auf der Oberfläche nachempfunden ist. In Kombination mit den kleinen Modulen 20x20 cm entstehen dadurch Räume voll warmer Ausstrahlung, die durch die ökologische Unbedenklichkeit des Feinsteinzeugs einen zusätzlichen Vorzug erhalten.

Unos ligeros encrespamientos y unos esmaltes sedosos remiten a la hábil labor de esparcimiento del artesano y, junto con los módulos pequeños de 20 x 20 cm, evocan habitaciones plenamente cálidas, con la tranquilidad que garantiza un grés porcelánico ecológico y seguro.

Едва уловимые неровности и шелковистая глазурь напоминают умелые приемы ручной обработки. Они, вместе с небольшими модулями 20x20 см оформляют наполненные теплом помещения, предлагая все преимущества экологичности и надежности керамогранита.



WALL: Struttura Zig Zag Amande Rettificato 40x80 - 15<sup>3/4</sup>x31<sup>1/2</sup> / Tozzetto Zig Zag Amande Rettificato 20x20 - 7<sup>7/8</sup>x7<sup>7/8</sup>  
FLOOR: Amande Rettificato 80x80 - 31<sup>1/2</sup>x31<sup>1/2</sup>

Distribuitor în România - Gada Ceramic București  
Str. Vlad Județu 48  
<https://gadaceramic.ro/produs/gresie-paris/>



Distribuitor în România - Gada Ceramic București  
Str. Vlad Județu 48  
<https://gadaceramic.ro/produs/gresie-paris/>

Plume + Ash

BRIGHT  
SURFACE

WALL: Tozzetto Righe Plume Rettificato 20x20 - 7<sup>7/8</sup>x7<sup>7/8</sup> / Plume Rettificato 20x20 - 7<sup>7/8</sup>x7<sup>7/8</sup> / EICHE Scottish Rettificato 26x160 - 10<sup>1/4</sup>x63"  
WASHBASIN: EICHE Scottish Rettificato 26x160 - 10<sup>1/4</sup>x63"  
FLOOR: Ash Rettificato 80x80 - 31<sup>1/2</sup>x31<sup>1/2</sup>

Distribuitoare în România - Gada Ceramic București  
Str. Vlad Județu 48  
<https://gadaceramic.ro/produs/gresie-paris/>



LE TONALITÀ LUMINOSE E LA MORBIDA FINITURA DI SUPERFICIE RIMANDANO ALL'ARCHITETTURA UN'ESTETICA PREZIOSA E ASSOLUTO CALORE. IL GRES PORCELLANATO NOVABELL È UN MATERIALE INSENSIBILE AL CALPESTIO, FACILE DA PULIRE, IGIENICO E PRATICO, CARATTERISTICHE IMPRESCINDIBILI PER GLI SPAZI WELLNESS E TUTTI I LUOGHI PUBBLICI.

THE GLOWING COLOURS AND SOFT SURFACE FINISH CONTRIBUTE AN EXQUISITE AESTHETIC AND UNRIVALLED WARMTH TO ARCHITECTURAL SPACES. NOVABELL PORCELAIN STONEWARE IS IMMUNE TO FOOT TRAFFIC WEAR, EASY TO CLEAN, HYGIENIC AND PRACTICAL, ESSENTIAL CHARACTERISTICS FOR WELLNESS LOCATIONS AND ALL PUBLIC PLACES.



Les tonalités lumineuses et la douce finition superficielle apportent à l'architecture une esthétique précieuse et une chaleur absolue. Le grès cérame NovaBell est une matière résistante au piétinement, facile à nettoyer, hygiénique et pratique. Ce sont là des caractéristiques indispensables pour les centres de bien-être et pour tous les lieux publics.

Die leuchtenden Farbtöne und die weiche Haptik schaffen eine elegante, warme Ausstrahlung. NovaBell Feinsteinzeug ist verschleißfestes, reinigungsfreundliches, hygienisches und praktisches Material. Aufgrund dieser Eigenschaften eignet es sich hervorragend für Gestaltungen im Wellnesssektor und im Objektbereich.

Las tonalidades luminosas y el suave acabado superficial le confieren a la estructura arquitectónica una estética preciosa y la máxima calidez. El grés porcelánico NovaBell es un material que no se desgasta con las pisadas, fácil de limpiar, higiénico y práctico, características imprescindibles en centros de bienestar y en todos los locales públicos.

Светлые тона и мягкая отделка поверхности придают архитектуре престижный вид и выраженное тепло. Керамогранит NovaBell не подвергается износу от хождения, легко чистится, является гигиеничным и практичным - бесценные характеристики в wellness-пространствах и на всех общественных объектах.



# Ciment + Plume

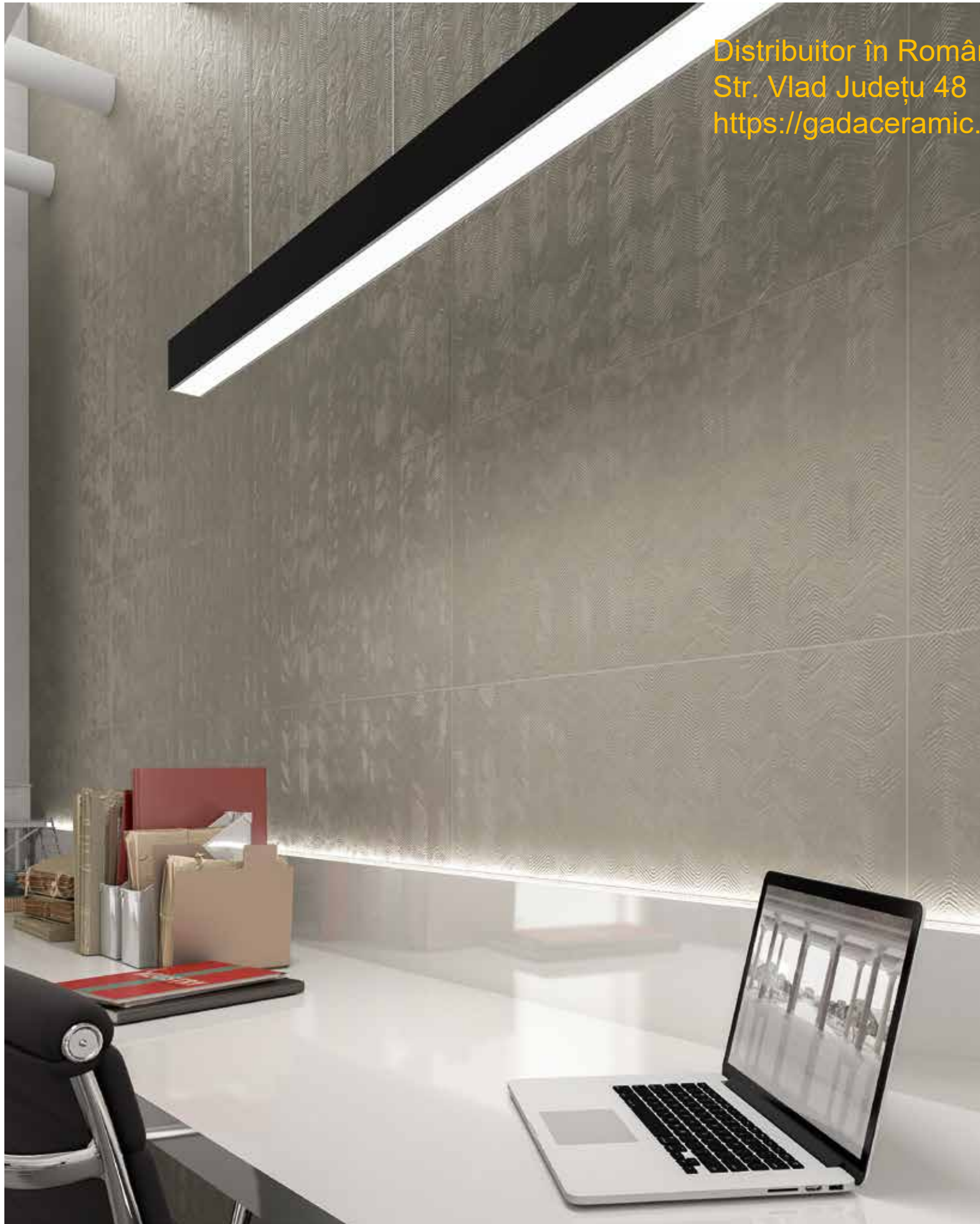
## CONTEMPORARY INDUSTRIAL-CHIC

Distribuitor în România - Gada Ceramic București  
Str. Vlad Județu 48  
<https://gadaceramic.ro/produs/gresie-paris/>



WALL: Struttura Zig Zag Plume Rettificato 40x80 - 15<sup>3/4</sup>x31<sup>11/2</sup> / Struttura Zig Zag Ciment Rettificato 40x80 - 15<sup>3/4</sup>x31<sup>11/2</sup>  
FLOOR: Ciment Rettificato 80x80 - 31<sup>11/2</sup>x31<sup>11/2</sup>

Distribuitoar în România - Gada Ceramic București  
 Str. Vlad Județu 48  
<https://gadac ceramic.ro/produs/gresie-paris/>



PARIS SA INTERPRETARE GLI SPAZI PUBBLICI SEGUENDO L'EVOLUZIONE DELLE MODE E DEL TEMPO. **IL DESIGN DELLA MATERIA OFFRE UNO SPAZIO PRIVILEGIATO DOVE LA SPERIMENTAZIONE NON È MAI FINE A SE STESSA, MA OFFRE UN SISTEMA DI SUPERFICI ACCOGLIENTI DA VIVERE TUTTI I GIORNI.**

PARIS SUCCESSFULLY INTERPRETS PUBLIC SPACES IN LINE WITH THE DEVELOPMENTS OF FASHION AND TIME. **THE MATERIAL'S DESIGN CREATES LUXURY INTERIORS WHERE EXPERIMENTATION IS NEVER AN END IN ITSELF, BUT ORIGINATES A SYSTEM OF WELCOMING SURFACES TO BE ENJOYED EVERY DAY.**

Paris sait interpréter les lieux publics en suivant l'évolution des modes et du temps. **L'esprit design de la matière crée un espace privilégié, où l'expérimentation n'est pas une fin en soi, mais un système de surfaces accueillantes à vivre tous les jours.**

Paris verleiht öffentlichen Räumen einen zeitgemäßen, modischen Look. **Das Design der Fliese bietet einen gestalterischen Spielraum, wo das Experimentieren nicht zum Selbstzweck dient, sondern ein System von Oberflächen mit gemütlicher Ausstrahlung für eine ungezwungene Atmosphäre hervorbringt.**

Paris sabe interpretar los espacios públicos siguiendo la evolución de las modas y del tiempo. **El diseño de la materia ofrece un espacio privilegiado en el que la experimentación, lejos de ser un fin en sí misma, ofrece un sistema de superficies acogedoras que vivir todos los días.**

Paris умеет отделять общественные пространства, идя в ногу с развитием мод и эпох. **Дизайн материалов предлагает привилегированное пространство, в котором экспериментирование не является самоцелью, а возможностью создания уютных поверхностей ежедневного использования.**

Distribuitor în România - Gada Ceramic București  
Str. Vlad Județu 48  
<https://gadaceramic.ro/produs/gresie-paris/>



WALL: Tozzetto Righe Plume Rettificato 20x20 - 7<sup>n</sup>7/8x7<sup>n</sup>7/8 / Tozzetto Righe Noir Rettificato 20x20 - 7<sup>n</sup>7/8x7<sup>n</sup>7/8



WALL: Ciment Rettificato 20x20 - 7<sup>n</sup>7/8x7<sup>n</sup>7/8 / Tozzetto Righe Ciment Rettificato 20x20 - 7<sup>n</sup>7/8x7<sup>n</sup>7/8



TECHNICAL DATA

TECHNICAL	DIN 51130	DIN 51097	BCR	ANSI DCOF	Deep Abrasion Resistance	MOHS	Recommended Use
N NATURAL	R9	-	DRY > 0.40 WET > 0.40	WET ≥ 0.42	< 175 mm <sup>3</sup> max	≥ 5	4

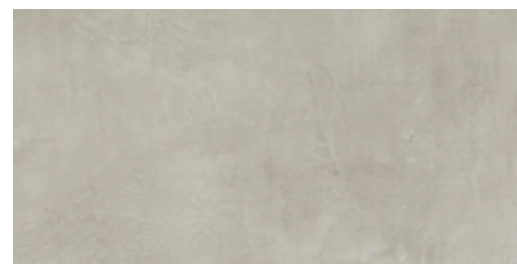
# ash



80x80 - 31<sup>1</sup>/<sub>2</sub>x31<sup>1</sup>/<sub>2</sub>"  
**PRS 18RT** Ash Rettificato **1080**



80x160 - 31<sup>1</sup>/<sub>2</sub>x63"  
**PRS 186R** Ash Rettificato **1110**



40x80 - 15<sup>3</sup>/<sub>4</sub>x31<sup>1</sup>/<sub>2</sub>"  
**PRS 14RT** Ash Rettificato **1090**



40x80 - 15<sup>3</sup>/<sub>4</sub>x31<sup>1</sup>/<sub>2</sub>"  
**PRS 17RT** Struttura Zig Zag Ash Rett. **1100**



40x80 - 15<sup>3</sup>/<sub>4</sub>x31<sup>1</sup>/<sub>2</sub>"  
**PRS 19RT** Struttura Righe Ash Rett. **1100**



7x80 - 2<sup>3</sup>/<sub>4</sub>x31<sup>1</sup>/<sub>2</sub>"  
**PRS B18K** Battiscopa Ash Rettificato **260**



20x20 - 7<sup>7</sup>/<sub>8</sub>x7<sup>7</sup>/<sub>8</sub>"  
**PRS 12RT** Ash Rett. **1105**



20x20 - 7<sup>7</sup>/<sub>8</sub>x7<sup>7</sup>/<sub>8</sub>"  
**PRS 11RT** Tozz. Zig-Zag Ash Rett. **1110**



20x20 - 7<sup>7</sup>/<sub>8</sub>x7<sup>7</sup>/<sub>8</sub>"  
**PRS 15RT** Tozz. Righe Ash Rett. **1110**

COORDINATED DÉCO

20x20 - 7<sup>7</sup>/<sub>8</sub>x7<sup>7</sup>/<sub>8</sub>"  
**DEC 272K** Cementine Mix **1105**



120x120 - 47<sup>1</sup>/<sub>4</sub>x47<sup>1</sup>/<sub>4</sub>"  
**PRS 112R** Ash Rettificato **1110**



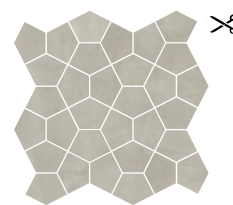
60x120 - 23<sup>5</sup>/<sub>8</sub>x47<sup>1</sup>/<sub>4</sub>"  
**PRS 01RT** Ash Rettificato **1080**



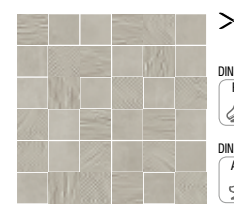
60x60 - 23<sup>5</sup>/<sub>8</sub>x23<sup>5</sup>/<sub>8</sub>"  
**PRS 10RT** Ash Rettificato **1060**



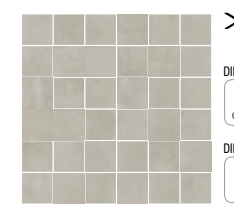
30x60 - 11<sup>13</sup>/<sub>16</sub>x23<sup>5</sup>/<sub>8</sub>"  
**PRS 16RT** Ash Rettificato **1035**



27x27 - 10<sup>5</sup>/<sub>8</sub>x10<sup>5</sup>/<sub>8</sub>"  
**PRS 117K** Mos. Losanga Ash **3150**



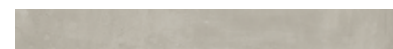
30x30 - 11<sup>13</sup>/<sub>16</sub>x11<sup>13</sup>/<sub>16</sub>"  
**PRS 115K** Mos. 5x5 Mix Ash **3120**



30x30 - 11<sup>13</sup>/<sub>16</sub>x11<sup>13</sup>/<sub>16</sub>"  
**PRS 119K** Mos. 5x5 Ash **3115**



30x60 - 11<sup>13</sup>/<sub>16</sub>x23<sup>5</sup>/<sub>8</sub>"  
**PRS 13RT** Struttura Righe Ash Rett. **1070**



7x60 - 2<sup>3</sup>/<sub>4</sub>x23<sup>5</sup>/<sub>8</sub>"  
**PRS B10K** Battiscopa Ash Rett. **230**

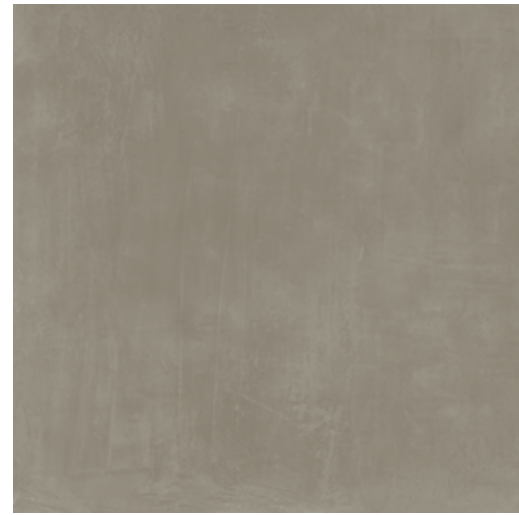


Distribuitor în România - Gada Ceramic București  
 Str. Vlad Județu 48  
<https://gadaceramic.ro/produs/gresie-paris/>



TECHNICAL DATA

TECHNICAL	DIN 51130	DIN 51097	BCR	ANSI DCOF	Deep Abrasion Resistance	MOHS	Recommended Use
N NATURAL	R9	-	DRY > 0.40 WET > 0.40	WET ≥ 0.42	< 175 mm <sup>3</sup> max	≥ 5	4



80x80 - 31<sup>1</sup>/<sub>2</sub>x31<sup>1</sup>/<sub>2</sub>"  
**PRS 28RT** Ciment Rettificato **1080**



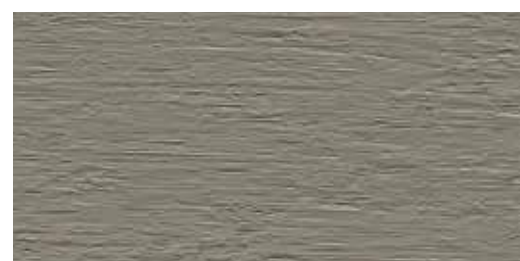
80x160 - 31<sup>1</sup>/<sub>2</sub>x63"  
**PRS 286R** Ciment Rettificato **1110**



40x80 - 15<sup>3</sup>/<sub>4</sub>x31<sup>1</sup>/<sub>2</sub>"  
**PRS 24RT** Ciment Rettificato **1090**



40x80 - 15<sup>3</sup>/<sub>4</sub>x31<sup>1</sup>/<sub>2</sub>"  
**PRS 27RT** Struttura Zig Zag Ciment Rett. **1100**



40x80 - 15<sup>3</sup>/<sub>4</sub>x31<sup>1</sup>/<sub>2</sub>"  
**PRS 29RT** Struttura Righe Ciment Rett. **1100**



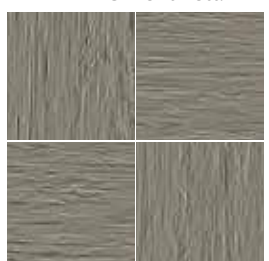
7x80 - 2<sup>3</sup>/<sub>4</sub>x31<sup>1</sup>/<sub>2</sub>"  
**PRS B28K** Battiscopa Ciment Rettificato **260**



20x20 - 7<sup>7</sup>/<sub>8</sub>x7<sup>7</sup>/<sub>8</sub>"  
**PRS 22RT** Ciment Rett. **1105**



20x20 - 7<sup>7</sup>/<sub>8</sub>x7<sup>7</sup>/<sub>8</sub>"  
**PRS 21RT** Tozz. Zig-Zag Ciment Rett. **1110**



20x20 - 7<sup>7</sup>/<sub>8</sub>x7<sup>7</sup>/<sub>8</sub>"  
**PRS 25RT** Tozz. Righe Ciment Rett. **1110**

COORDINATED DÉCO

20x20 - 7<sup>7</sup>/<sub>8</sub>x7<sup>7</sup>/<sub>8</sub>"  
**DEC 472K** Cementine Mix Light Beige **1105**

# ciment



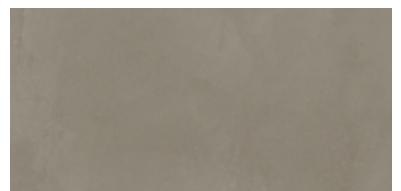
120x120 - 47<sup>1</sup>/<sub>4</sub>x47<sup>1</sup>/<sub>4</sub>"  
**PRS 212R** Ciment Rettificato **1110**



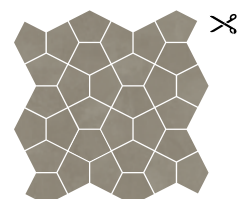
60x120 - 23<sup>5</sup>/<sub>8</sub>x47<sup>1</sup>/<sub>4</sub>"  
**PRS 02RT** Ciment Rettificato **1080**



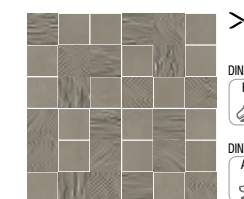
60x60 - 23<sup>5</sup>/<sub>8</sub>x23<sup>5</sup>/<sub>8</sub>"  
**PRS 20RT** Ciment Rettificato **1060**



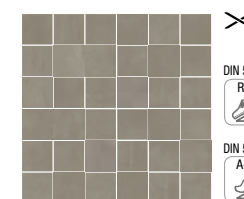
30x60 - 11<sup>13</sup>/<sub>16</sub>x23<sup>5</sup>/<sub>8</sub>"  
**PRS 26RT** Ciment Rettificato **1035**



27x27 - 10<sup>5</sup>/<sub>8</sub>x10<sup>5</sup>/<sub>8</sub>"  
**PRS 227K** Mos. Losanga Ciment **3150**



30x30 - 11<sup>13</sup>/<sub>16</sub>x11<sup>13</sup>/<sub>16</sub>"  
**PRS 225K** Mos. 5x5 Mix Ciment **3120**



30x30 - 11<sup>13</sup>/<sub>16</sub>x11<sup>13</sup>/<sub>16</sub>"  
**PRS 229K** Mos. 5x5 Ciment **3115**



7x60 - 2<sup>3</sup>/<sub>4</sub>x23<sup>5</sup>/<sub>8</sub>"  
**PRS B20K** Battiscopa Ciment Rett. **230**



TECHNICAL DATA

TECHNICAL	DIN 51130	DIN 51097	BCR	ANSI DCOF	Deep Abrasion Resistance	MOHS	Recommended Use
N NATURAL	R9	-	DRY > 0.40 WET > 0.40	WET ≥ 0.42	< 175 mm <sup>3</sup> max	≥ 5	4

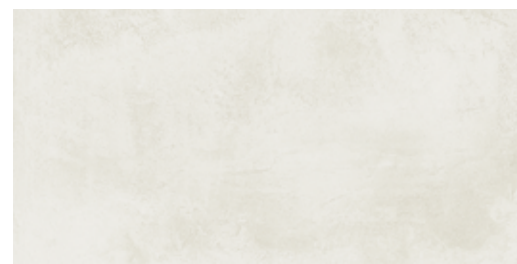
# plume



80x80 - 31"1/2x31"1/2  
**PRS 88RT** Plume Rettificato **1080**



80x160 - 31"1/2x63"  
**PRS 886R** Plume Rettificato **1110**



40x80 - 15"3/4x31"1/2  
**PRS 84RT** Plume Rettificato **1090**



40x80 - 15"3/4x31"1/2  
**PRS 87RT** Struttura Zig Zag Plume Rett. **1100**



40x80 - 15"3/4x31"1/2  
**PRS 89RT** Struttura Righe Plume Rett. **1100**



7x80 - 2"3/4x31"1/2  
**PRS B88K** Battiscopa Plume Rettificato **260**



20x20 - 7"7/8x7"7/8  
**PRS 82RT** Plume Rett. **1105**



20x20 - 7"7/8x7"7/8  
**PRS 81RT** Tozz. Zig-Zag Plume Rett. **1110**



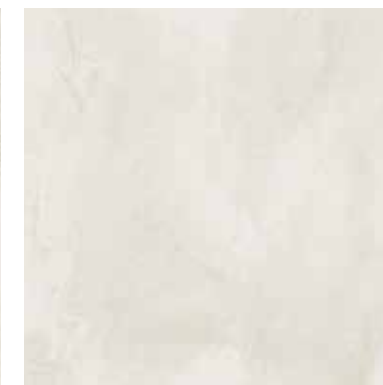
20x20 - 7"7/8x7"7/8  
**PRS 85RT** Tozz. Righe Plume Rett. **1110**



120x120 - 47"1/4x47"1/4  
**PRS 812R** Plume Rettificato **1110**



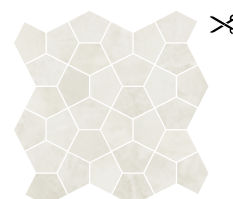
60x120 - 23"5/8x47"1/4  
**PRS 08RT** Plume Rettificato **1080**



60x60 - 23"5/8x23"5/8  
**PRS 80RT** Plume Rettificato **1060**



30x60 - 11"13/16x23"5/8  
**PRS 86RT** Plume Rettificato **1035**



27x27 - 10"5/8x10"5/8  
**PRS 887K** Mos. Losanga Plume **3150**



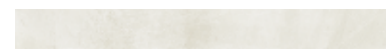
30x30 - 11"13/16x11"13/16  
**PRS 885K** Mos. 5x5 Mix Plume **3120**



30x30 - 11"13/16x11"13/16  
**PRS 889K** Mos. 5x5 Plume **3115**



30x60 - 11"13/16x23"5/8  
**PRS 83RT** Struttura Righe Plume Rett. **1070**



7x60 - 2"3/4x23"5/8  
**PRS B80K** Battiscopa Plume Rett. **230**



5x5 - 2"x2"  
**PRS 808K** Tozz. 5x5 Pavone Plume Mix **130**



Distribuitor în România - Gada Ceramic București  
 Str. Vlad Județu 48  
<https://gadac ceramic.ro/produs/gresie-paris/>



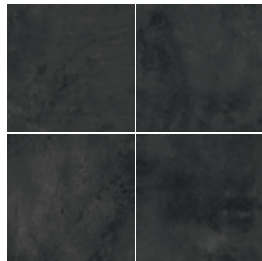
TECHNICAL	DIN 51130	DIN 51097	BCR	ANSI DCOF	Deep Abrasion Resistance	MOHS	Recommended Use
N NATURAL	R9	-	DRY > 0.40 WET > 0.40	WET ≥ 0.42	< 175 mm <sup>3</sup> max	≥ 5	4



80x80 - 31<sup>1</sup>/<sub>2</sub>x31<sup>1</sup>/<sub>2</sub>  
**PRS 98RT** Noir Rettificato **02**  
**1080**



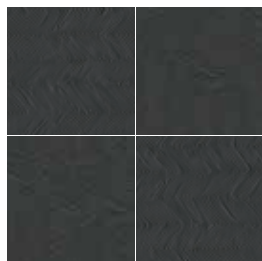
40x80 - 15<sup>3</sup>/<sub>4</sub>x31<sup>1</sup>/<sub>2</sub>  
**PRS 94RT** Noir Rettificato **04**  
**1090**



20x20 - 7<sup>7</sup>/<sub>8</sub>x7<sup>7</sup>/<sub>8</sub>  
**PRS 92RT** Noir Rett. **27**  
**1105**



40x80 - 15<sup>3</sup>/<sub>4</sub>x31<sup>1</sup>/<sub>2</sub>  
**PRS 97RT** Struttura Zig Zag Noir Rett. **04**  
**1100**



20x20 - 7<sup>7</sup>/<sub>8</sub>x7<sup>7</sup>/<sub>8</sub>  
**PRS 91RT** Tozz. Zig-Zag Noir Rett. **27**  
**1110**



40x80 - 15<sup>3</sup>/<sub>4</sub>x31<sup>1</sup>/<sub>2</sub>  
**PRS 99RT** Struttura Righe Noir Rett. **04**  
**1100**



20x20 - 7<sup>7</sup>/<sub>8</sub>x7<sup>7</sup>/<sub>8</sub>  
**PRS 95RT** Tozz. Righe Noir Rett. **27**  
**1110**



40x80 - 15<sup>3</sup>/<sub>4</sub>x31<sup>1</sup>/<sub>2</sub>  
**PRS 990K** Decoro Brosse Noir Rett. **04**  
**627**



7,5x80 - 2<sup>15</sup>/<sub>16</sub>x31<sup>1</sup>/<sub>2</sub>  
**PRS 991K** Listello Brosse Noir Rett. **06**  
**350**



7x80 - 2<sup>3</sup>/<sub>4</sub>x31<sup>1</sup>/<sub>2</sub>  
**PRS B98K** Battiscopa Noir Rettificato **08**  
**260**

#noir



60x120 - 23<sup>5</sup>/<sub>8</sub>x47<sup>1</sup>/<sub>4</sub>  
**PRS 09RT** Noir Rettificato **02**  
**1080**



60x60 - 23<sup>5</sup>/<sub>8</sub>x23<sup>5</sup>/<sub>8</sub>  
**PRS 90RT** Noir Rettificato **03**  
**1060**



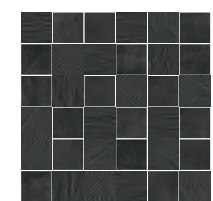
30x60 - 11<sup>13</sup>/<sub>16</sub>x23<sup>5</sup>/<sub>8</sub>  
**PRS 96RT** Noir Rettificato **07**  
**1035**



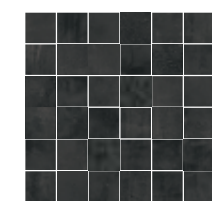
20x20 - 7<sup>7</sup>/<sub>8</sub>x7<sup>7</sup>/<sub>8</sub>  
**DEC 272K** Cementine Mix **27**  
**1105**



27x27 - 10<sup>5</sup>/<sub>8</sub>x10<sup>5</sup>/<sub>8</sub>  
**PRS 997K** Mos. Losanga Noir **10**  
**3150**



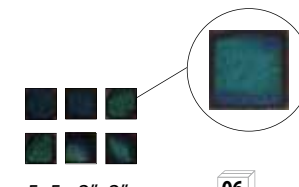
30x30 - 11<sup>13</sup>/<sub>16</sub>x11<sup>13</sup>/<sub>16</sub>  
**PRS 995K** Mos. 5x5 Mix Noir **10**  
**3120**



30x30 - 11<sup>13</sup>/<sub>16</sub>x11<sup>13</sup>/<sub>16</sub>  
**PRS 999K** Mos. 5x5 Noir **10**  
**3115**



7x60 - 2<sup>3</sup>/<sub>4</sub>x23<sup>5</sup>/<sub>8</sub>  
**PRS B90K** Battiscopa Noir Rett. **15**  
**230**



5x5 - 2"x2"  
**PRS 909K** Tozz. 5x5 Pavone Noir Mix **06**  
**130**

cm. 80x160 inch 31 1/2x63"	cm. 80x80 inch 31 1/2x31 1/2"	cm. 40x80 inch 15 3/4x31 1/2"	cm. 120x120 inch 47 1/4x47 1/4"	cm. 60x60 inch 23 5/8x23 5/8"	cm. 30x30 inch 11 13/16x23 5/8"	cm. 20x20 inch 7 7/8x7 7/8"

Distribuitor în România - Gada Ceramic București  
 Str. Vlad Județu 48  
<https://gadac ceramic.ro/produs/gresie-paris/>



TECHNICAL DATA

TECHNICAL	DIN 51130	DIN 51097	BCR	ANSI DCOF	Deep Abrasion Resistance	MOHS	Recommended Use
N NATURAL	R9	-	DRY > 0.40 WET > 0.40	WET ≥ 0.42	< 175 mm <sup>3</sup> max	≥ 5	4



80x80 - 31 1/2x31 1/2  
**PRS 48RT** Amande Rettificato **1080**



40x80 - 15 3/4x31 1/2  
**PRS 44RT** Amande Rettificato **1090**



40x80 - 15 3/4x31 1/2  
**PRS 47RT** Struttura Zig Zag Amande Rett. **1100**



40x80 - 15 3/4x31 1/2  
**PRS 49RT** Struttura Righe Amande Rett. **1100**



20x20 - 7 7/8x7 7/8  
**PRS 42RT** Amande Rett. **1105**



20x20 - 7 7/8x7 7/8  
**PRS 41RT** Tozz. Zig-Zag Amande Rett. **1110**



20x20 - 7 7/8x7 7/8  
**PRS 45RT** Tozz. Righe Amande Rett. **1110**

# amande



60x120 - 23 5/8x47 1/4  
**PRS 04RT** Amande Rettificato **1080**



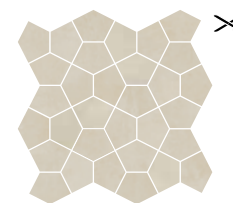
60x60 - 23 5/8x23 5/8  
**PRS 40RT** Amande Rettificato **1060**



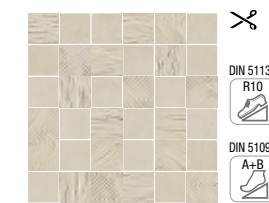
30x60 - 11 13/16x23 5/8  
**PRS 46RT** Amande Rettificato **1035**



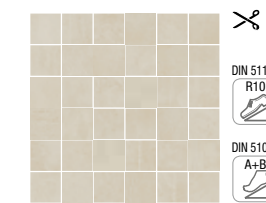
20x20 - 7 7/8x7 7/8  
**DEC 472K** Cementine Mix Light Beige **1105**



27x27 - 10 5/8x10 5/8  
**PRS 447K** Mos. Losanga Amande **3150**



30x30 - 11 13/16x11 13/16  
**PRS 445K** Mos. 5x5 Mix Amande **3120**



30x30 - 11 13/16x11 13/16  
**PRS 449K** Mos. 5x5 Amande **3115**



30x60 - 11 13/16x23 5/8  
**PRS 43RT** Struttura Righe Amande Rett. **1070**




7x80 - 2 3/4x31 1/2  
**PRS B48K** Battiscopa Amande Rettificato **260**




7x60 - 2 3/4x23 5/8  
**PRS B40K** Battiscopa Amande Rett. **230**

The International reference standards: ANSI - ASTM

The international reference standards: ISO - EN

Characteristics and Test methods 	Requirements ANSI A 137.1	Our general values
Determination of water absorption - (ASTM C 373)	Average value $E_b \leq 0,5\%$	Average value $\leq 0,5\%$
<b>Classification</b>	<b>Definition § 3.0</b>	<b>Porcelain tiles</b>
		<b>Physical properties</b>
Breaking strength - (ASTM C 648)	Average $\geq 250$ lbf (1.11 kN) Individual $\geq 225$ lbf (1.00 kN)	Complies
Visible abrasion - (ASTM C 1027)	As reported	Class 0 - 5
NovaBell classification of abrasion resistance	(see Annex N)	<b>Class 4</b>
Thermal shock resistance (ASTM C 428)	Pass	Complies
Crazing resistance (ASTM C 424)	Pass	Complies
Resistance to freeze/thaw cycling (ASTM C 1026)	As reported	Resistant
DCOF Resistance (ANSI A 137.1 Section 9.6)	$\geq 0.42$ <sup>(1)</sup>	DCOF $\geq 0.42$
Bond strength (ASTM C 482)	$\geq 50$ psi (0.34 MPa)	$> 1$ MPa
Color Uniformity (ASTM C 609 and ANSI A 137.1 Section 9.3) <sup>(2)</sup>	V0 - 3 Juds	See the specific section
		<b>Chemical properties</b>
Chemical resistance (ASTM C 650)	As reported	Resistant
Stain resistance (ASTM C 1378)	As reported	Resistant
		<b>Dimensions - Calibrated tiles</b>
Dimensions - (ASTM C 499) - (ASTM C 485) - (ASTM C 502)	See ANSI A 137.1 - Tab.10	Complies
		<b>Dimensions - Rectified tiles</b>
Dimensions - (ASTM C 499) - (ASTM C 485) - (ASTM C 502)	See ANSI A 137.1 - Tab.10	Complies


(1) For level interior spaces expected to be walked upon when wet - (2) For V0 tiles only

Characteristics and Test methods 	Requirements EN 14411 <sup>(1)</sup> - G / ISO 13006 <sup>(2)</sup> - G	Our general values
Determination of water absorption - (ISO 10545-3)	Average value $E_b \leq 0,5\%$ / Individual maximum 0,6%	Average value and individual maximum $< 0,5\%$
<b>Classification</b>	<b>Definition § 3.2 and § 3.7</b>	<b>BI<sub>a</sub> - Porcelain tiles</b>
		<b>Physical properties</b>
Modulus of rupture - (ISO 10545-4)	Average $\geq 35$ N/mm <sup>2</sup>	$\geq 35$ N/mm <sup>2</sup>
Breaking strength - (ISO 10545-4)	Average $\geq 1300$ N for thickness $\geq 7,5$ mm Average $\geq 700$ N for thickness $< 7,5$ mm	Complies
Abrasion resistance - (ISO 10545-7)	Abrasion class and cycles passed	Class 0 - 5
NovaBell classification of abrasion resistance	Annex N	<b>Class 4</b>
Coefficient of linear thermal expansion (ISO 10545-8)	Declared value <sup>(1)</sup> / Test method available <sup>(2)</sup>	$< 7,1 \times 10^{-6} \text{ } ^\circ\text{C}^{-1}$
Thermal shock resistance (ISO 10545-9)	Pass according to EN ISO 10545-1 <sup>(1)</sup> / Test method available <sup>(2)</sup>	Complies
Crazing resistance (ISO 10545-11)	Pass according to EN ISO 10545-1 <sup>(1)</sup> / Required <sup>(2)</sup>	Complies
Frost resistance (ISO 10545-12)	Pass according to EN ISO 10545-1 <sup>(1)</sup> / Required <sup>(2)</sup>	Complies
Moisture expansion (ISO 10545-10)	Declared value <sup>(1)</sup> / Test method available <sup>(2)</sup>	$\leq 0,2$ mm/m
Small colour differences (ISO 10545-16)	$\Delta E_{\text{cmc}} < 0,75$ <sup>(1)</sup>	If agreed
Impact resistance - (ISO 10545-5)	Declared value <sup>(1)</sup> / Test method available <sup>(2)</sup>	COR $> 0,75$
Reaction to fire	Class A1 or A1 <sub>FL</sub> <sup>(1)</sup>	<b>A1<sub>FL</sub> Classified Without Testing (CWT) - 96/603</b>
		<b>Chemical properties</b>
Chemical resistance -(GL) (ISO 10545-13)		
Resistance to low and high concentrations of acids and alkalis	Declared value <sup>(1)</sup> / Manufacturer is to state classification <sup>(2)</sup>	Resistant (see "Maintenance and care" section)
Resistance to household chemicals and swimming pool salts	Minimum class B	G A
Resistance to staining (ISO 10545-14)	Minimum class 3	5 (see "Maintenance and care" section)
Release of dangerous substances (ISO 10545-15)	Declared value <sup>(1)</sup> / Test method available <sup>(2)</sup>	Pb $< 0,1$ / Cd $< 0,01$ mg/dm <sup>2</sup>
		<b>Dimensions and surface quality</b>
Dimensions - (ISO 10545-2)	See ANNEX G	Complies
Surface quality - (ISO 10545-2 § 7)	<b>A minimum of 95% of the tiles shall be free from visible defects that would impair the appearance of a major area of tiles</b>	Complies


(1) Requirements according to EN 14411


(2) Requirements according to ISO 13006


Test methods	Requirements and references	Our general values
Determination of anti-slip properties - Workrooms and fields of activities with raised slip danger, walking method- Ramp test (DIN 51130) - Germany	BGR / ASR From R9 to R13	R 9
Determination of anti - slip properties. Wet-loaded barefoot areas - Walking method - Ramp test (DIN 51097) - Germany	GUV-I 8527 A - B - C	-
Dynamic Coefficient Friction wet and dry condition (BCR - ex BCRA) Italy	DM n. 236 / 1989 $\mu > 0,40$	$\mu > 0,40$
Scrath hardens of surface according to Mohs'	ex BS 6431-13 / ex EN 101	$\geq 5$





**PARIS NATURALE**


 Utilizzare il **QR CODE** per scaricare le schede tecniche

 Veuillez utiliser le **QR CODE** pour télécharger les fiches techniques

 Use the **QR CODE** to download data sheets


 Utilizar el **QR CODE** para descargar las fichas técnicas

 **QR CODE** benutzen um die technische datenblätter runter zu laden


 Используйте QR-код для скачивания технических характеристик


 La tabella in italiano con i dati tecnici è scaricabile su [www.novabell.it](http://www.novabell.it)

 The English language technical specification for each collection can be downloaded from [www.novabell.it](http://www.novabell.it)

 Die Tabelle in deutscher Sprache kann auf [www.novabell.it](http://www.novabell.it) heruntergeladen werden.

 Si vous le souhaitez, téléchargez le tableau contenant les données techniques en français en allant sur [www.novabell.it](http://www.novabell.it)

 Descargue la tabla de datos técnicos en español, disponible en [www.novabell.it](http://www.novabell.it)

 Таблицу на русском языке с техническими данными можно скачать с сайта [www.novabell.it](http://www.novabell.it)



AMANDE



ASH



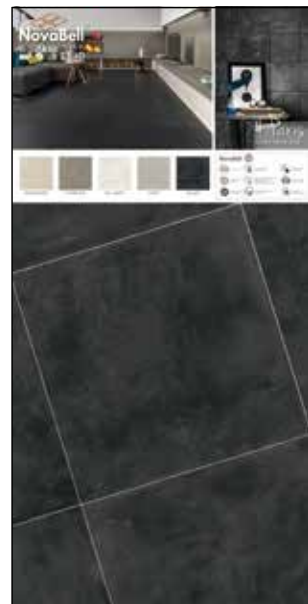
PLUME



PG PRS FT



CIMENT



NOIR



PG DEC FT

MERCHANDISING

Distributore în România - Gada Ceramic București  
 Str. Vlad Județu 48  
<https://gadac ceramic.ro/produs/gresie-paris/>



SCAPRS6



SCAPRS7

IMBALLI e PESI /

Packaging and weights / Verpackungen und Gewichte / Emballages et poids / Embalajes y pesos / Упаковка и вес

SCATOLA / BOX

PALLET

	pz	m2	kg	box	m2	kg	≡
80x160	2	2,560	59,9	20	51,200	1198	10,5
60x120	2	1,440	31,3	32	46,080	1002	10,5
120x120	1	1,440	35,5	34	48,960	1207	10,5
80x80	2	1,280	28,0	40	51,200	1120	10,5
40x80	4	1,280	27,8	48	61,440	1334	10,5
60x60	3	1,080	22,5	40	43,200	900	10,5
30x60	7	1,260	25,2	40	50,400	1008	10,5
20x20	27	1,080	25,0	68	73,440	1700	10,5



TECNOLOGIA, INNOVAZIONE E RICERCA NOVABELL

IT - I laboratori di ricerca NovaBell hanno creato una nuova generazione di superfici, caratterizzate dalla innovativa tecnologia digitale ad alta definizione.

GB - The NovaBell research laboratories have created a new generation of surfaces, featuring innovative high-definition digital technology.

D - Die NovaBell Forschungslabors haben eine neue Generation von Oberflächen entwickelt, die durch die innovative hoch auflösende Digitaltechnologie gekennzeichnet sind.

F - Les laboratoires de recherche NovaBell ont créé une nouvelle génération de surfaces, qui se caractérisent par une technologie numérique haute définition innovante.

ES - Los laboratorios de investigación NovaBell han creado una nueva generación de superficies, caracterizadas por la innovadora tecnología digital de alta definición.

RU - В НАУЧНО-ИССЛЕДОВАТЕЛЬСКОЙ ЛАБОРАТОРИИ NOVABELL БЫЛО РАЗРАБОТАНО НОВОЕ ПОКОЛЕНИЕ ПОВЕРХНОСТЕЙ, ОТЛИЧАЮЩИХСЯ ИННОВАЦИОННОЙ ЦИФРОВОЙ ТЕХНОЛОГИЕЙ ВЫСОКОГО РАЗРЕШЕНИЯ.

LEED® CERTIFICATION COMPLIANT

PARIS E' UN PRODOTTO CON PARTICOLARI CARATTERISTICHE DI ECOSOSTENIBILITA', CHE CONTRIBUISCE ALL'OTTENIMENTO DEI CREDITI PER LA CERTIFICAZIONE LEED (LEADERSHIP IN ENERGY AND ENVIROMENTAL DESIGN).

PARIS IS A PRODUCT WITH PARTICULAR ENVIRONMENTAL SUSTAINABILITY CHARACTERISTICS, THAT HELPS IN OBTAINING POINTS FOR LEED (LEADERSHIP IN ENERGY AND ENVIRONMENTAL DESIGN) CERTIFICATION.

PARIS IST EIN AUSGESPROCHEN UMWELTFREUNDLICHES PRODUKT, DAS ZUM ERREICHEN DER PUNKTE FÜR DIE ZERTIFIZIERUNG NACH LEED (LEADERSHIP IN ENERGY AND ENVIROMENTAL DESIGN) BEITRÄGT.

LA SERIE PARIS PRESENTE DE CARACTERISTIQUES SPECIFIQUES DE DEVELOPPEMENT DURABLE; ELLE CONTRIBUS A OBTENIR DE CREDITS POUR LA CERTIFICATION LEED (LEADERSHIP IN ENERGY AND ENVIROMENTAL DESIGN).

PARIS ES UN PRODUCTO CON CARACTERÍSTICAS DE SOSTENIBILIDAD MEDIOAMBIENTAL ESPECIALES, QUE FACILITA LA OBTENCIÓN DE PUNTOS PARA LA CERTIFICACIÓN LEED (LEADERSHIP IN ENERGY AND ENVIRONMENTAL DESIGN) LIDERAZGO EN ENERGÍA Y DISEÑO AMBIENTAL.

PARIS - ЭТО ПРОДУКЦИЯ СО СПЕЦИАЛЬНЫМИ ХАРАКТЕРИСТИКАМИ ЭКОЛОГИЧЕСКОЙ ЭФФЕКТИВНОСТИ, ПОЗВОЛЯЮЩАЯ ПОЛУЧАТЬ ЗАЧЕТНЫЕ ОЧКИ ДЛЯ СЕРТИФИКАТА LEED (LEADERSHIP IN ENERGY AND ENVIROMENTAL DESIGN).



Distribuitoare în România - Gada Ceramic București  
Str. Vlad Județu 48  
<https://gadaceramic.ro/produs/gresie-paris/>

CAT-PPS



NOVABELL SpA CERAMICHE ITALIANE  
via Molino, 1 - 42014 Roteglia (RE), Italia  
T +39 0536 86 11 11 - F +39 0536 85 12 05  
info@novabell.it - export@novabell.it  
[www.novabell.it](http://www.novabell.it)

